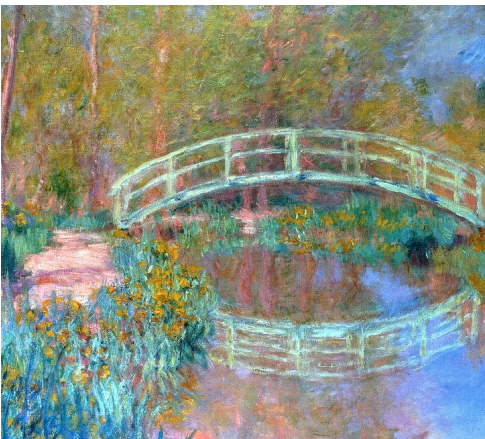


Travelling
KS2
Friday - Art and Crafts

Reflection Art

Today we will be drawing (or painting) pictures of boats in water. We will particularly look at drawing the reflection of the boat too.



Look at this picture of a reflection by Monet. It does not have a boat in it but you can see a clear reflection of the bridge at the trees in the water. This is what we are going to try and recreate.

First in a light pencil draw your water line onto your paper.

Next you can draw your boat and the other elements of your scene above the water.

Under the water line draw the reflection of the things you have drawn on top of the water.

When you colour them in you can make the edges a little rougher on the reflection to show the water rippling. You could also try colouring over the top with a light blue to show the water, or if you are painting use a very watered down blue to reflect this.

You should get something like this:

